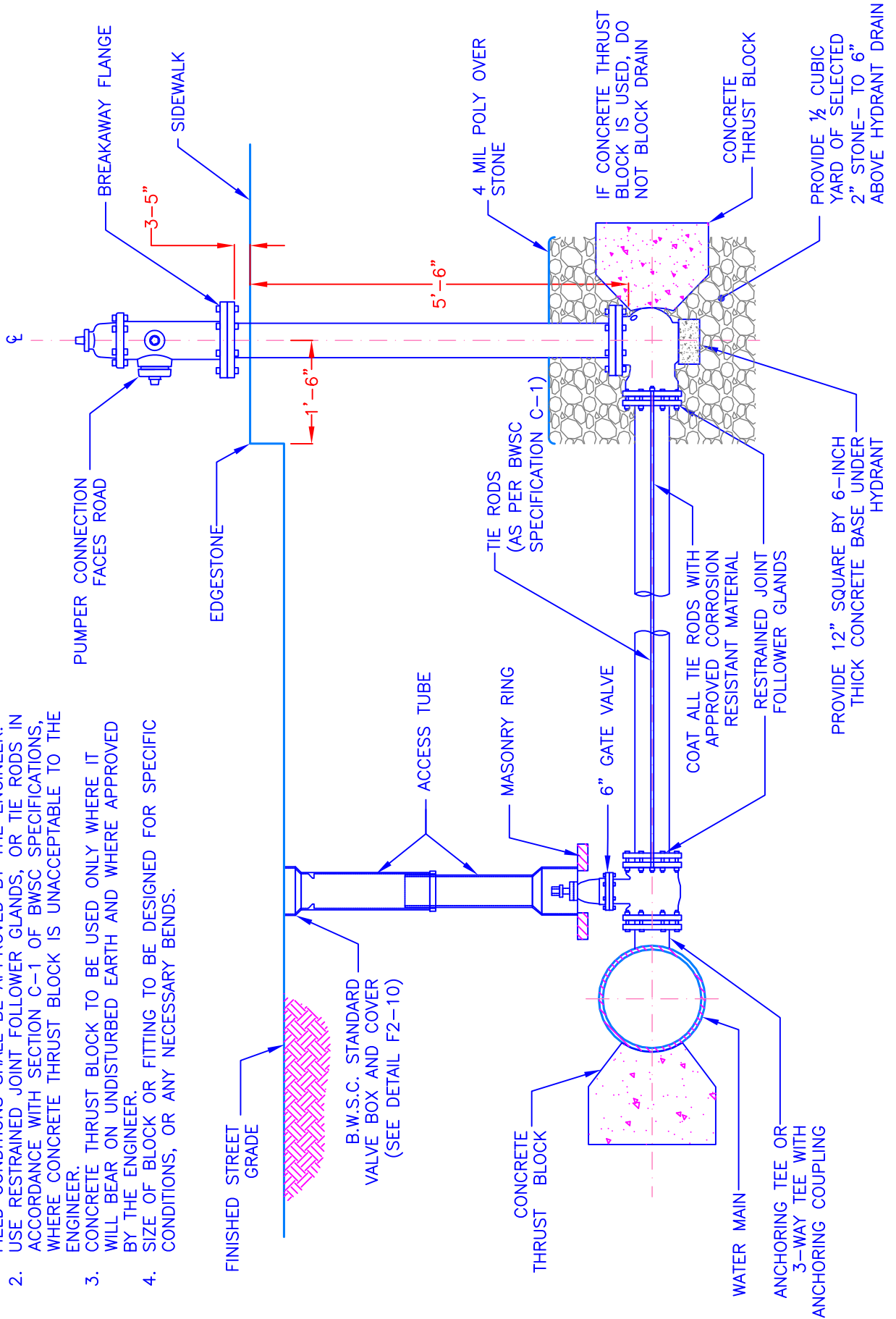


NOTES:

1. ANY DEVIATIONS OF THIS TYPICAL CONNECTION TO MEET FIELD CONDITIONS SHALL BE APPROVED BY THE ENGINEER.
2. USE RESTRAINED JOINT FOLLOWER GLANDS, OR TIE RODS IN ACCORDANCE WITH SECTION C-1 OF BWSC SPECIFICATIONS, WHERE CONCRETE THRUST BLOCK IS UNACCEPTABLE TO THE ENGINEER.
3. CONCRETE THRUST BLOCK TO BE USED ONLY WHERE IT WILL BEAR ON UNDISTURBED EARTH AND WHERE APPROVED BY THE ENGINEER.
4. SIZE OF BLOCK OR FITTING TO BE DESIGNED FOR SPECIFIC CONDITIONS, OR ANY NECESSARY BENDS.



Boston Water and Sewer Commission
 980 HARRISON AVE., BOSTON, MA 02119
 (617) 989-7000 www.bwsc.org

TYPICAL FIRE HYDRANT CONNECTION FOR HIGH OR LOW SERVICE LINE
 Scale: Not To Scale

DATE:
 March 6, 2017

DETAIL NO.
A-07a