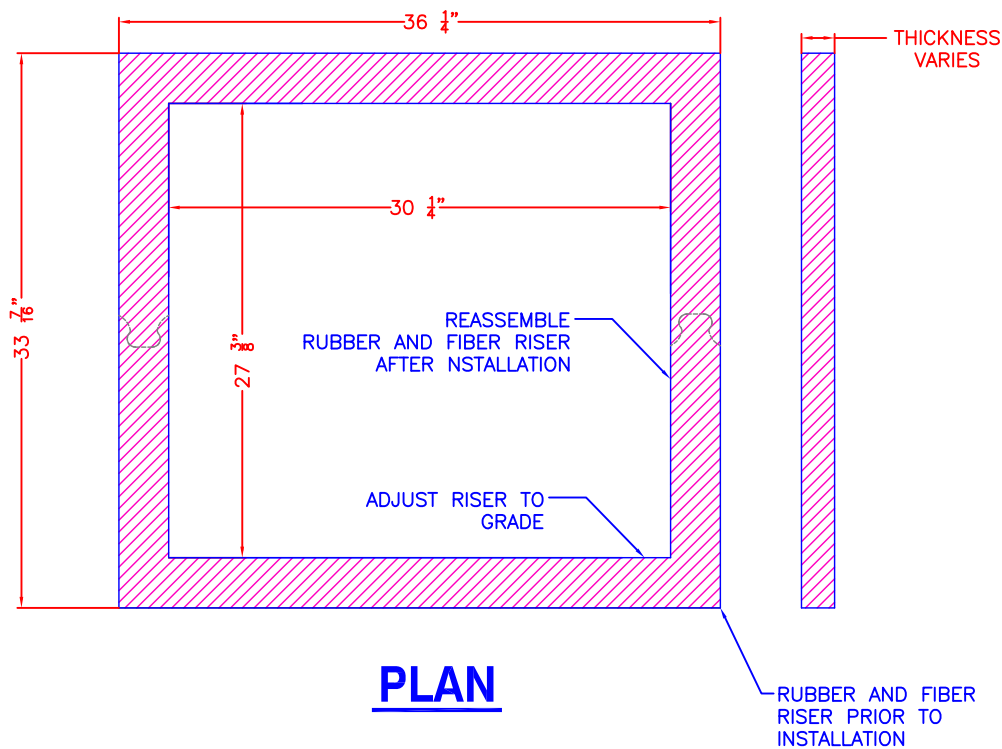


1. CONTRACTOR TO INSTALL BRICK AND APPLY MORTAR BETWEEN THE RISER AND THE CONCRETE MANHOLE AS NECESSARY.
2. RISERS SHALL MEET THE MINIMUM PHYSICAL PROPERTY STANDARDS EQUAL TO THAT OF THE INFRA-RISER® RUBBER COMPOSITE ADJUSTMENT RISERS AS MANUFACTURED AND SUPPLIED BY EJ.



PLAN

INFRA-RISER® FOR CATCH BASIN					
RUBBER AND FIBER RISER AFTER INSTALLATION					
SIZE	THICKNESS	OUTER (W)	OUTER (H)	INNER (W)	INNER (H)
30"	1/2", 1", OR 2"	36 1/4"	33 7/16"	30 1/4"	27 3/8"

Location:Filename: V:\eng\ACAD_STD\Technical Details\B - Sewer Details\B-31 - Catch Basin Riser.dwg
 Plotted on: Wednesday, April 4, 2018 - 11:40 AM by Donohoe, William



Boston Water and Sewer Commission
 980 HARRISON AVE., BOSTON, MA 02119
 (617) 989-7000 www.bwsc.org

CATCH BASIN RISER

Scale: Not To Scale

DATE:
 Mar. 30, 2018

DETAIL NO.
 B-31