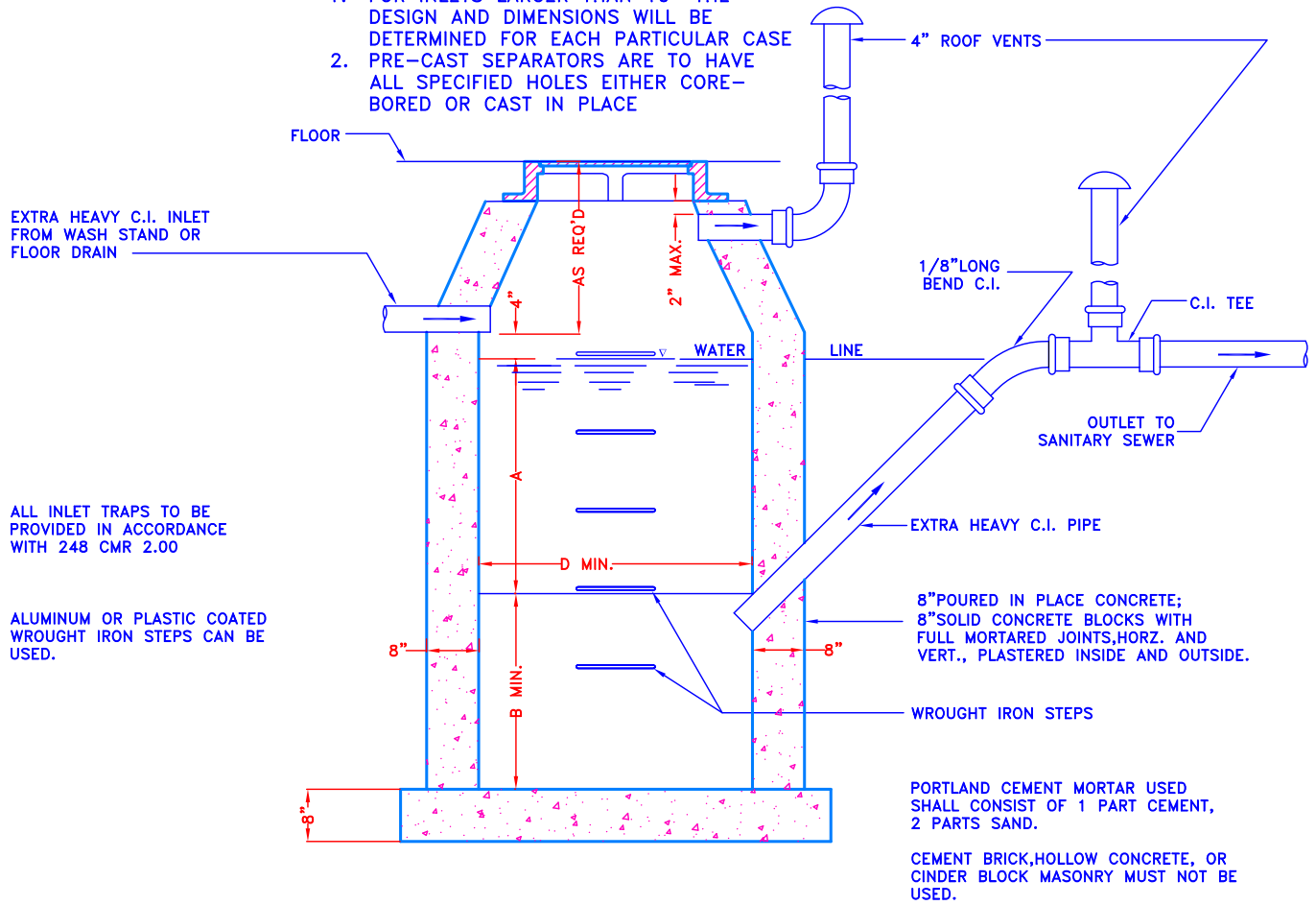


| INLET | D | A | B | INLET | D | A | B |
|-------|---------------|-------|-------|---------------|---------------|-------|-------|
| 4" | 3'-6"ø | 3'-0" | 2'-6" | 8" | 5'-0"ø | 6'-0" | 5'-0" |
| 5" | 3'-6"ø | 5'-0" | 4'-0" | 8" | 5'-6" x 5'-6" | 4'-6" | 4'-0" |
| | 3'-6" x 3'-6" | 4'-0" | 3'-0" | | 6'-0"ø | 4'-0" | 3'-6" |
| | 4'-0" | 3'-8" | 3'-0" | | 6'-0" x 6'-0" | 3'-0" | 2'-6" |
| | 4'-0" x 4'-0" | 3'-0" | 2'-6" | | 6'-6"ø | 3'-6" | 3'-0" |
| | 4'-6" | 3'-0" | 2'-6" | 6'-6" x 6'-6" | 3'-0" | 2'-6" | |
| 6" | 4'-0"ø | 5'-0" | 4'-6" | 10" | 5'-6"ø | 7'-6" | 6'-6" |
| | 4'-0" x 4'-0" | 4'-0" | 3'-6" | 10" | 6'-0" x 6'-0" | 5'-6" | 4'-6" |
| | 4'-6"ø | 4'-0" | 3'-6" | | 6'-0"ø | 6'-6" | 5'-6" |
| | 4'-6" x 4'-6" | 3'-6" | 3'-0" | | 6'-6"ø | 3'-6" | 3'-0" |
| | 5'-0"ø | 3'-6" | 3'-0" | | 6'-6" x 6'-6" | 5'-0" | 4'-0" |
| | 5'-0" x 5'-0" | 3'-0" | 2'-6" | | | | |

NOTES:

- FOR INLETS LARGER THAN 10" THE DESIGN AND DIMENSIONS WILL BE DETERMINED FOR EACH PARTICULAR CASE
- PRE-CAST SEPARATORS ARE TO HAVE ALL SPECIFIED HOLES EITHER CORE-BORED OR CAST IN PLACE



ALL INLET TRAPS TO BE PROVIDED IN ACCORDANCE WITH 248 CMR 2.00

ALUMINUM OR PLASTIC COATED WROUGHT IRON STEPS CAN BE USED.

GENERAL CONSTRUCTION NOTES

BASIN TO BE LOCATED OUTSIDE OF BUILDING WHERE POSSIBLE, COVER TO HAVE A CENTER HOLE.

A TIGHT COVER MUST BE USED IF BASIN IS LOCATED INSIDE OF BUILDING.

OPENING SHALL BE NOT LESS THAN 24" DIA.

THE CATCH BASIN SHALL BE SO LOCATED AND CONSTRUCTED THAT SURFACE WATER SHALL BE EXCLUDED.

INLET PIPE SHALL BE AT LEAST FOUR INCHES ABOVE NORMAL WATER LINE.

WHERE SUBJECT TO FROST OR CRUSHING CONDITIONS, OUTLET SHALL BE AT LEAST THREE FEET BELOW THE SURFACE.

THE NEW CATCH BASIN MUST BE FILLED WITH CLEAN WATER BEFORE USING, AND AFTER BEING EMPTIED FOR PERIODIC CLEANING.

ALL OIL AND GASOLINE MUST BE REMOVED BEFORE CLEANING OUT THE BASIN, AND MUST NOT BE DISCHARGED INTO THE SEWER THROUGH OTHER FIXTURES.

SPECIFICATIONS FOR COVERING SPECIAL CASES OR CONDITIONS, SHALL BE APPROVED BY THE LOCAL AUTHORITIES, AND THE AUTHORITIES OF THE M.W.R.A.

WROUGHT IRON STEPS SHALL BE SPACED ABOUT 18" APART.

BOTH VENTS SHALL BE EXTENDED INDEPENDENTLY 18" ABOVE THE ROOF, OR AS APPROVED BY THE LOCAL AUTHORITIES, AND THE AUTHORITIES OF THE M.W.R.A.

OUTLET PIPE TO BE 45 DEGREE ANGLE.

