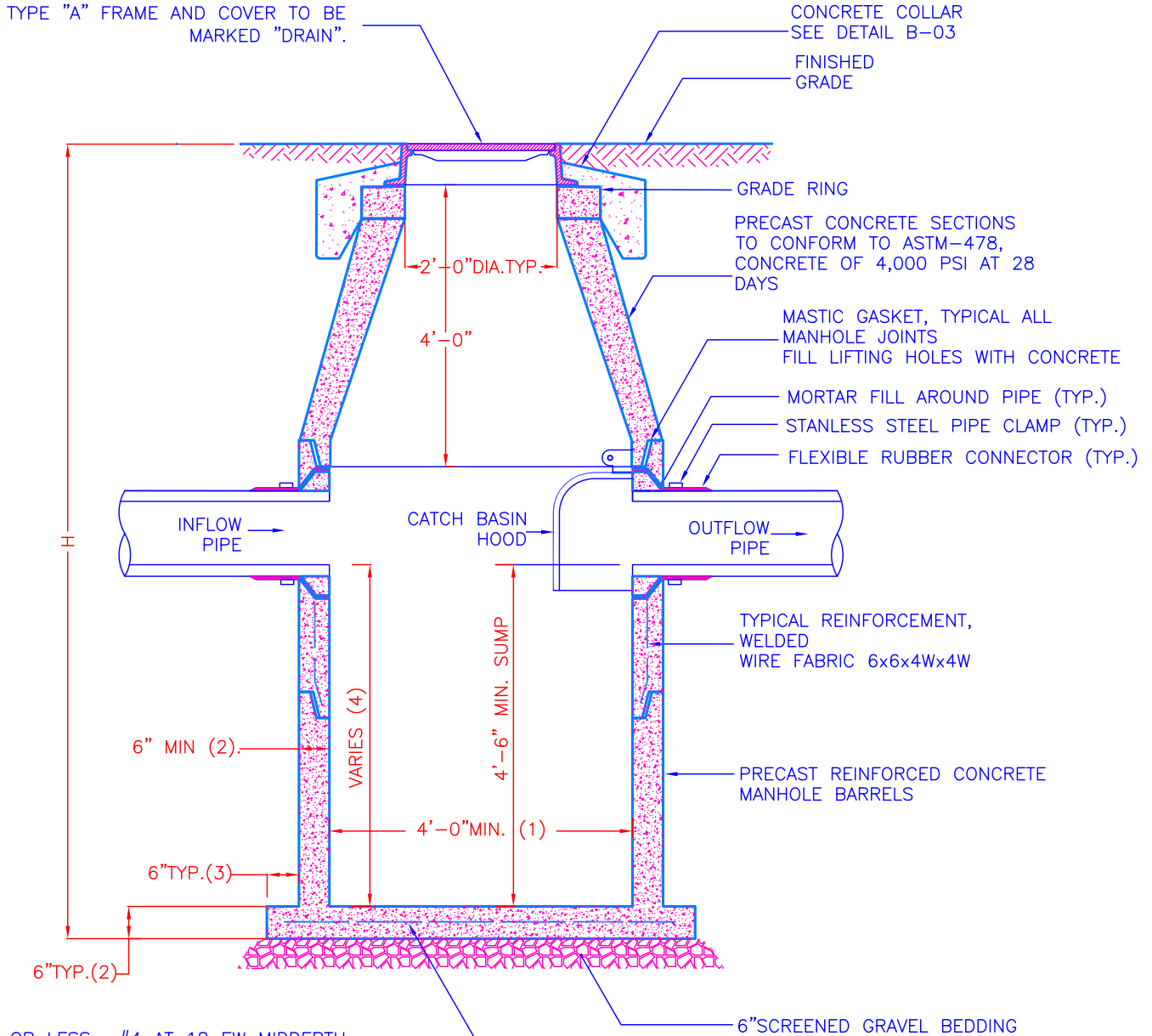


**NOTES:**

1. 5'-0" DIAMETER FOR ALL MANHOLE DEPTHS GREATER THAN 20 FEET OR WHEN ORDERED BY THE ENGINEER
2. 6" MIN. WALL THICKNESS AND 7 INCH MIN. BASE THICKNESS WITH 5'-0" DIAMETER MANHOLES
3. 6 INCH LIP OPTIONAL UNLESS OTHERWISE NOTED
4. IN SOME INSTALLATIONS, THE INFLOW PIPE WILL BE LOWER THAN THE OUTFLOW PIPE, AND THE SUMP DEPTH WILL BE GREATER THAN 4'-6" TO MAINTAIN A MINIMUM DISTANCE OF 2'-6" FROM THE INVERT OF THE INFLOW PIPE TO THE BOTTOM OF THE SUMP



H= 10' OR LESS —#4 AT 18 EW MIDDEPTH  
 H= 10' TO 20' —#4 AT 12 EW MIDDEPTH  
 H= 20' TO 30' —#5 AT 12 EW MIDDEPTH  
 IN ADDITION TO WELDED WIRE FABRIC

Location/Name: V:\eng\CAD\_STD\Technical Details\B - Sewer Details\B-07 - Drain Sump Manhole.dwg  
 Plotted on: Wednesday, May 16, 2018 - 3:38 PM by Donchoe, William



**Boston Water and Sewer Commission**

980 HARRISON AVE.,  
 (617) 989-7000

BOSTON, MA 02119  
 www.bwsc.org

**DRAIN SUMP MANHOLE**

Scale: Not To Scale

DATE:

May 16, 2018

DETAIL NO.

**B-07**