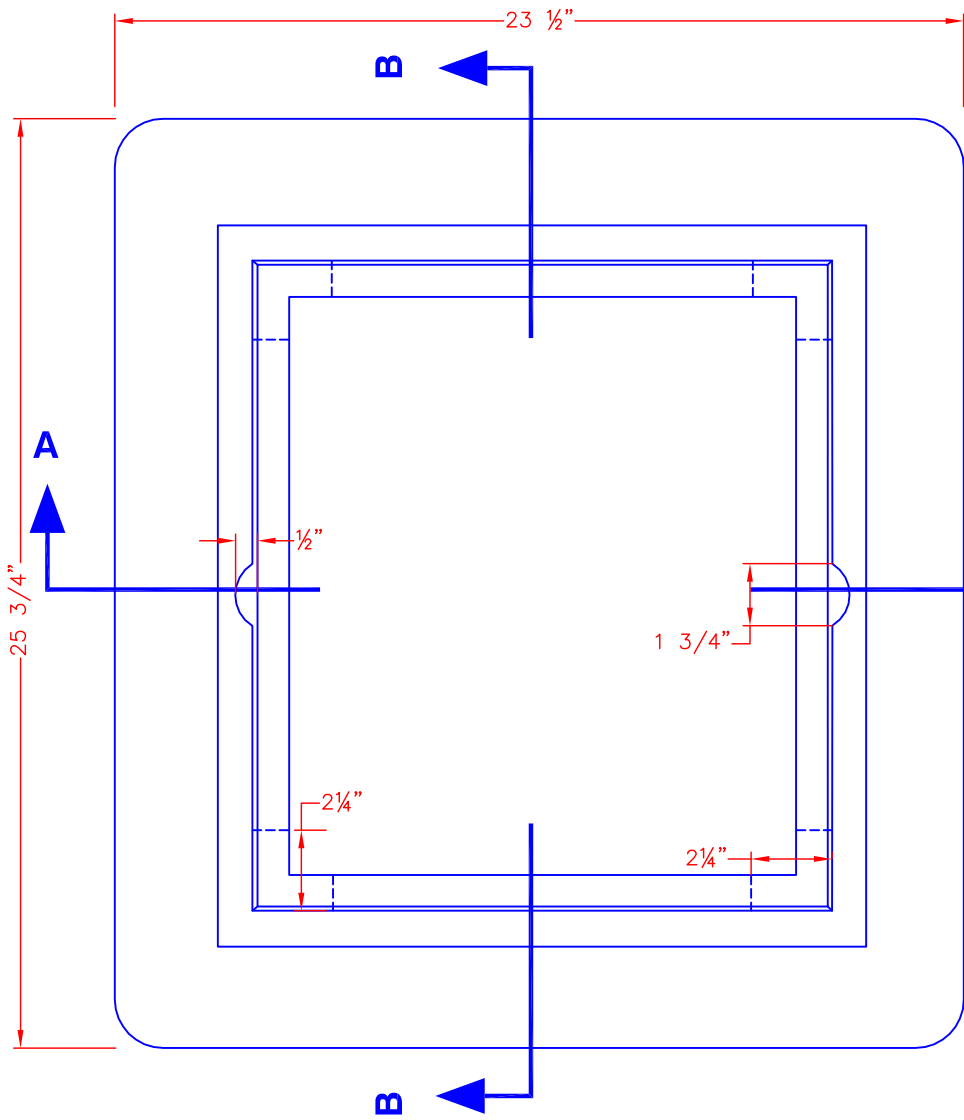
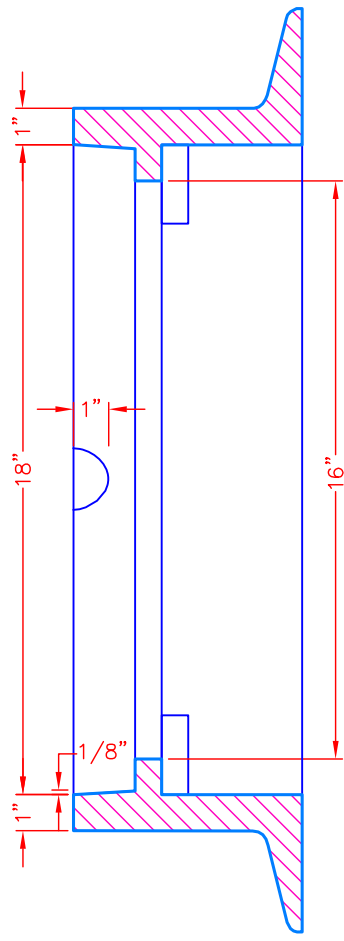


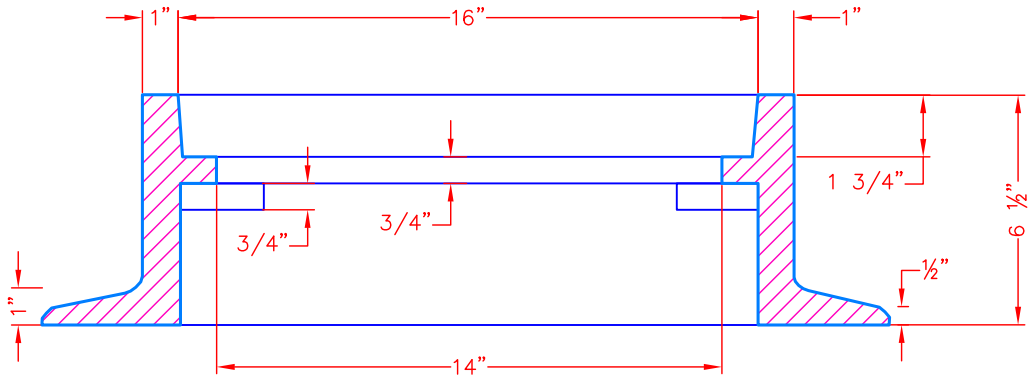
**NOTE:**  
 ALL CASTINGS SHALL BE MANUFACTURED FROM GRAY IRON CONFORMING TO ASTM A48 CLASS 35B AND/OR AASHTO M105 CLASS 35B.



**PLAN**



**SECTION B-B**



**SECTION A-A**

Location: V:\eng\ACAD\_STD\Technical Details\F - Castings\F1-D21 - 16x18 Gate Frame.dwg  
 Plotted on: Thursday, January 23, 2014 - 10:06 AM by Donohoe, William



**Boston Water and Sewer Commission**  
 980 HARRISON AVE., BOSTON, MA 02119  
 (617) 989-7000 www.bwsc.org

**16" x 18" GATE FRAME**  
**NO. 99736365**  
 Scale: Not To Scale

DATE:  
 Jan 17, 2014

DETAIL NO.  
**F1-D21**