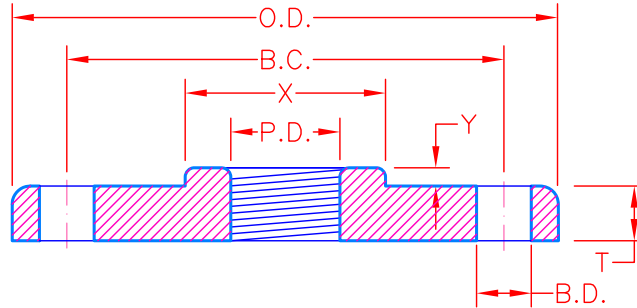


NOTE:

ALL CASTINGS SHALL BE MANUFACTURED FROM GRAY IRON CONFORMING TO ASTM A48 CLASS 35B AND/OR AASHTO M105 CLASS 35B.



COMPANION FLANGE SIZE	O.D. FLANGE	B.C. BOLT CIRCLE	T THICKNESS	X HUB DIA.	Y HUB HEIGHT	B.D. BOLT HOLE DIA	NO. OF BOLTS	P.D. NOM. PIPE DIA
1½" x 7½"	7½"	6"	¾"	2¾"	¼"	¾"	4	1½"
2" x 7½"	7½"	6"	¾"	3⅛"	⅝"	¾"	4	2"
1½" x 9"	9"	7½"	15/16"	2⅝"	⅝"	¾"	8	1½"
2" x 9"	9"	7½"	15/16"	3⅝"	⅜"	¾"	8	2"
2" x 11"	11"	9½"	1"	3¾"	⅝"	7/8"	8	2"

Location:Filename: V:\eng\ACAD_STD\Technical\Details\F - Castings\F3-05 - Companion Flange Reducing Type.dwg
Plotted on: Thursday, January 23, 2014 - 10:09 AM by Donohoe, William



Boston Water and Sewer Commission

980 HARRISON AVE., BOSTON, MA 02119
(617) 989-7000 www.bwsc.org

COMPANION FLANGE REDUCING TYPE

Scale: Not To Scale

DATE:
JAN 17, 2014

DETAIL NO.
F3-05