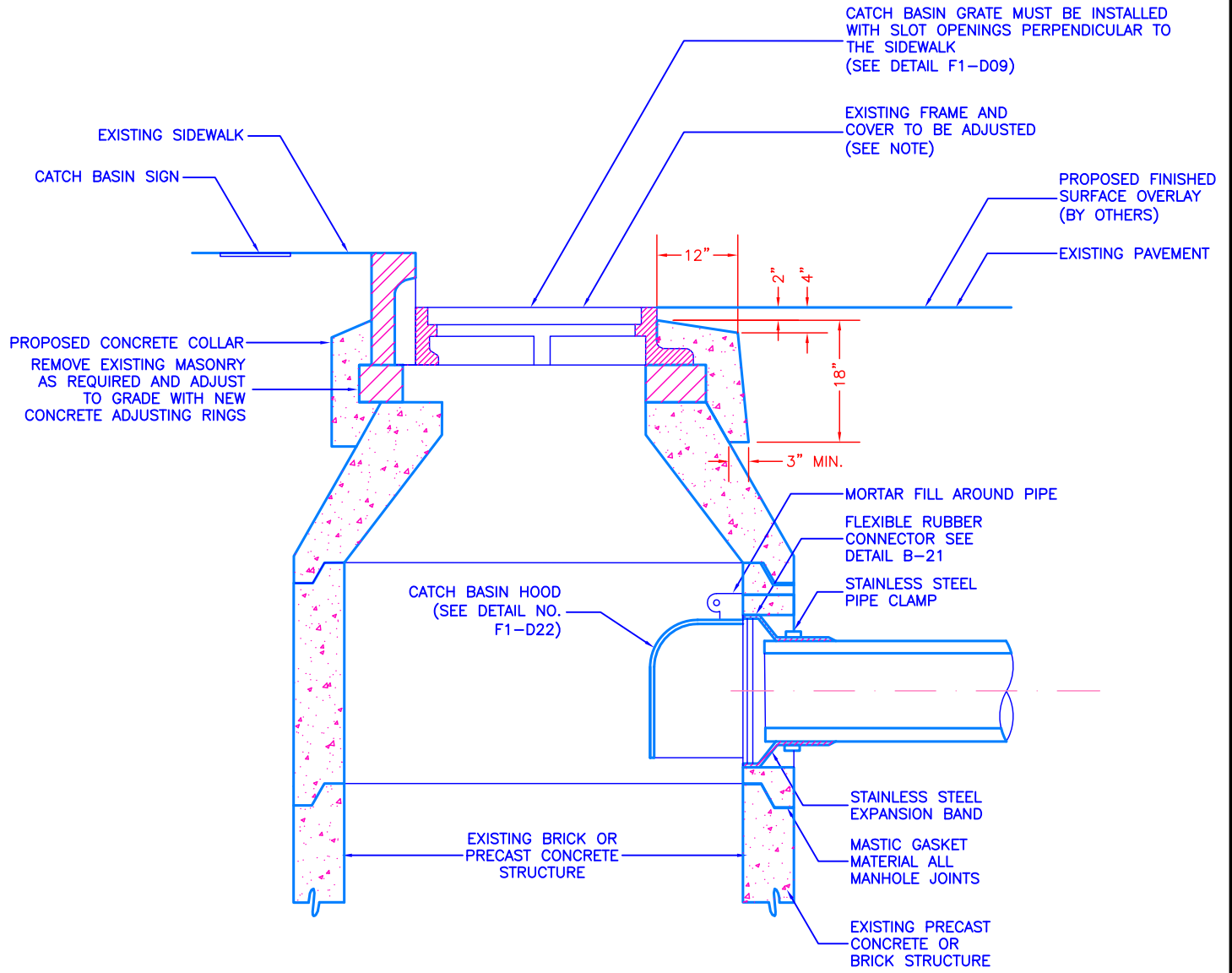


Location:Filename: V:\eng\ACAD\_STD\Technical Details\B - Sewer Details\B-01a - Catch Basin Adjustment to Grade.dwg  
 Plotted on: Monday, October 21, 2013 - 2:47 PM by Donohoe, William



**NOTE:**  
 OVERLAY BY OTHERS WILL BE 1- $\frac{1}{4}$ " AT  
 CENTERLINE TAPERING TO 1" AT CURBLINE



**Boston Water and  
 Sewer Commission**

980 HARRISON AVE., BOSTON, MA 02119  
 (617) 989-7000 www.bwsc.org

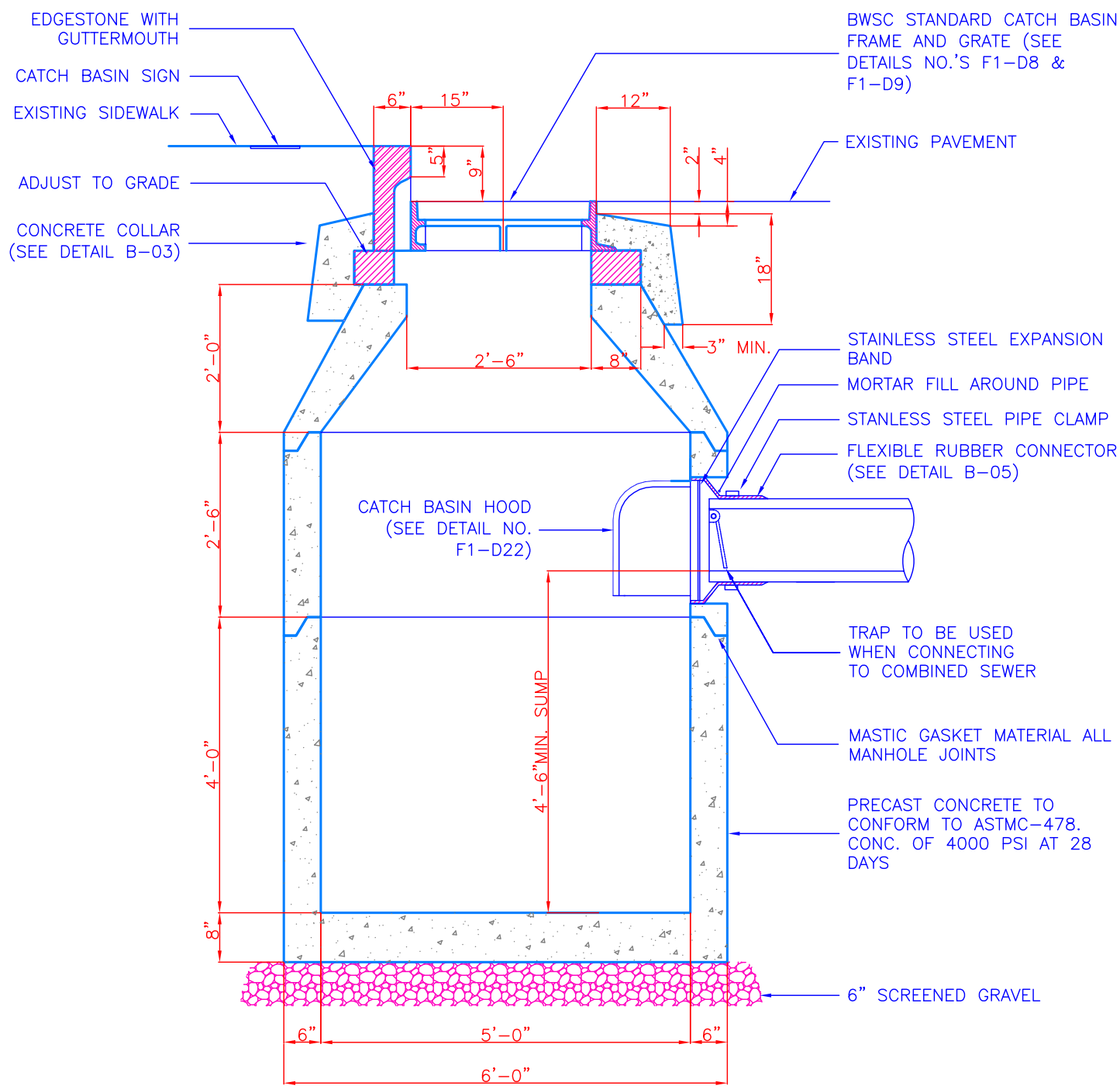
**CATCH BASIN ADJUSTMENT TO GRADE**

Scale: Not To Scale

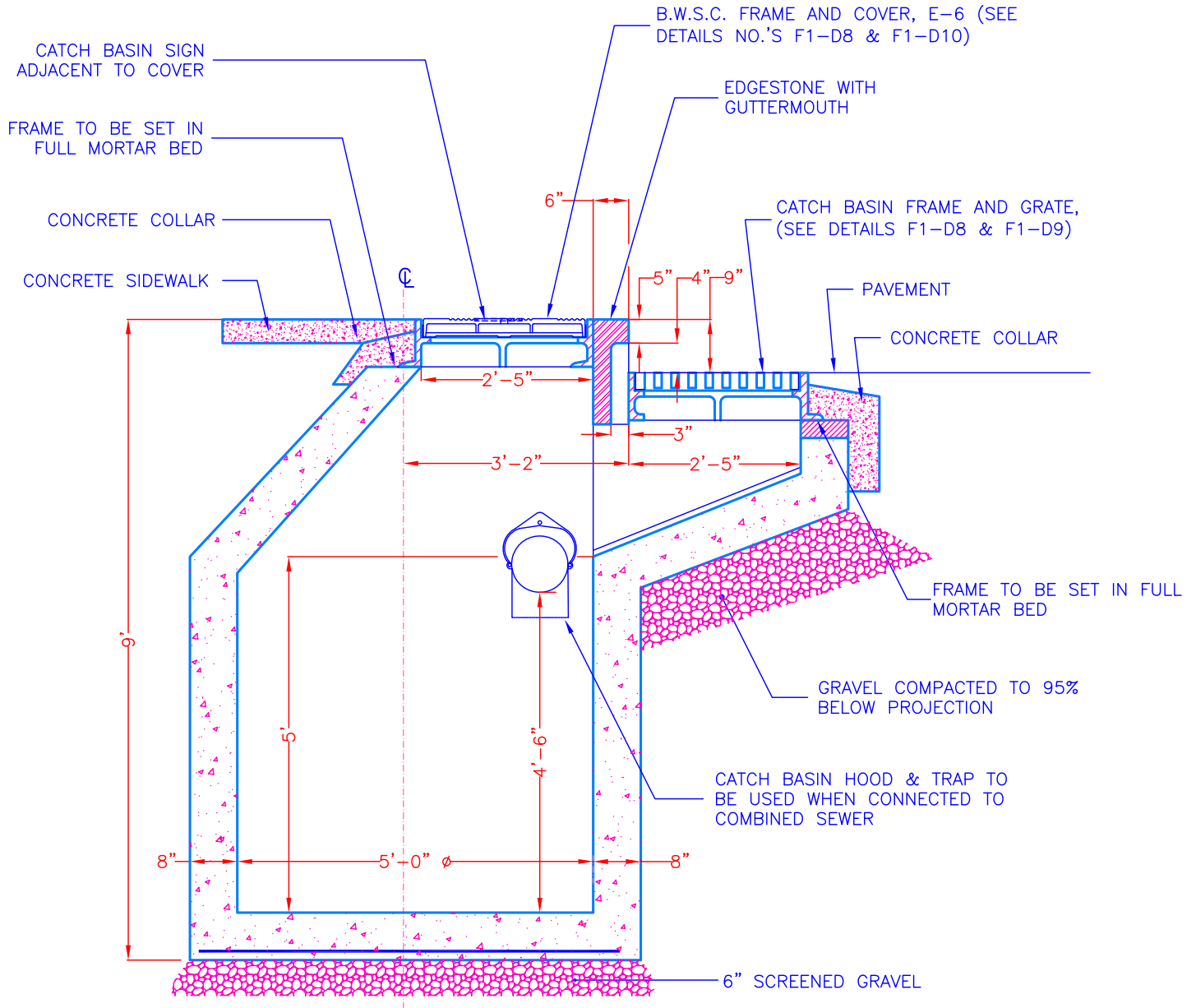
DATE:  
 Oct. 21, 2013

DETAIL NO.  
**B-01a**

Location:Filename: V:\eng\ACAD\_STD\Technical Details\B - Sewer Details\B-01b - Standard Catch Basin No 5.dwg  
 Plotted on: Monday, October 21, 2013 - 12:20 PM by Donohoe, William



Location: V:\eng\ACAD\_STD\Technical Details\B - Sewer Details\B-01c - Standard Catch Basin No. 13.dwg  
 Plotted on: Monday, October 21, 2013 - 12:42 PM by Donohoe, William



**Boston Water and Sewer Commission**  
 980 HARRISON AVE., BOSTON, MA 02119  
 (617) 989-7000 www.bwsc.org

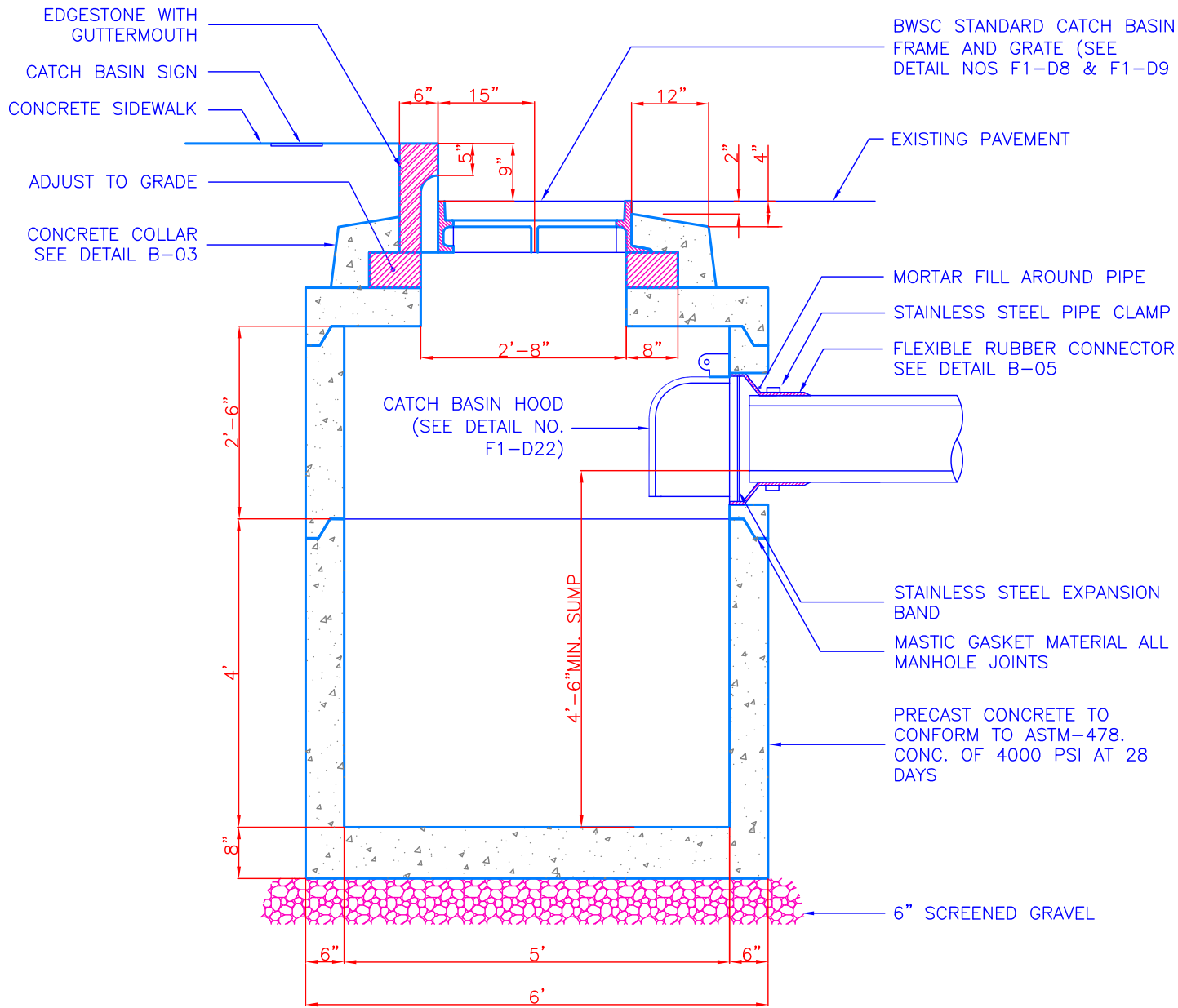
**STANDARD CATCH BASIN NO. 13**

Scale: Not To Scale

DATE:  
 Oct. 21, 2013

DETAIL NO.  
**B-01c**

Location:Filename: V:\eng\ACAD\_STD\Technical Details\B - Sewer Details\B-01d - Shallow Catch Basin.dwg  
 Plotted on: Monday, October 21, 2013 - 2:47 PM by Donohoe, William



**Boston Water and Sewer Commission**

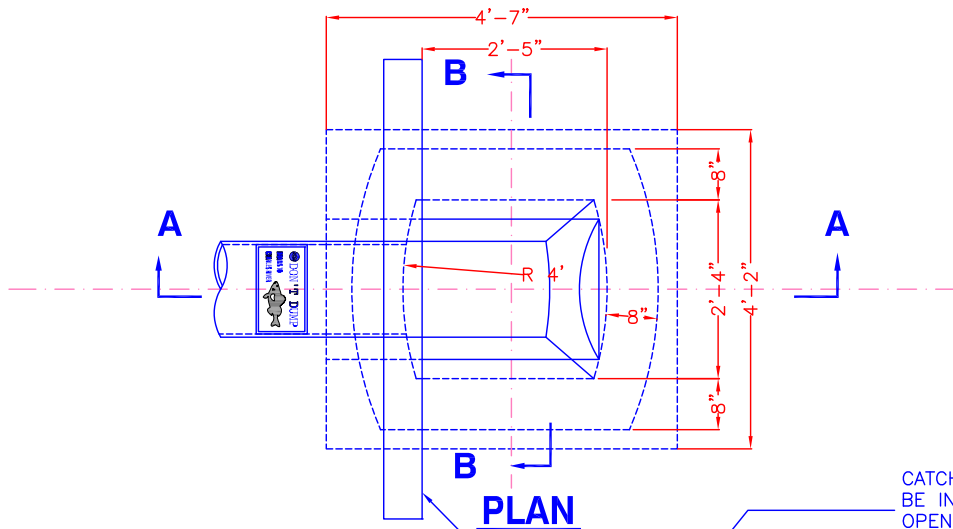
980 HARRISON AVE., BOSTON, MA 02119  
 (617) 989-7000 www.bwsc.org

**SHALLOW CATCH BASIN**

Scale: Not To Scale

DATE:  
 Oct. 21, 2013

DETAIL NO.  
**B-01d**



CONCRETE SIDEWALK  
CATCH BASIN SIGN  
CONC. COLLAR  
SEE DETAIL B-03

FACE OF  
EDGESTONE

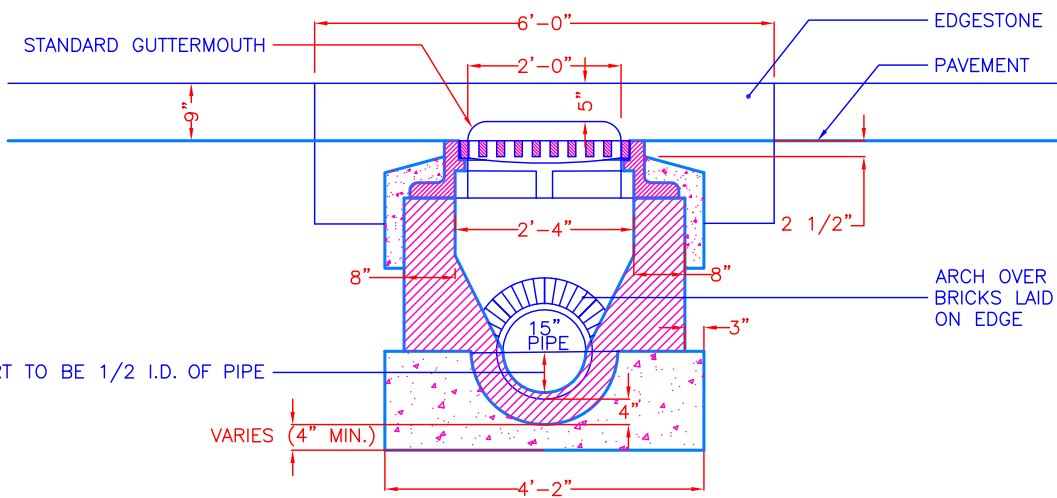
CATCH BASIN GRATE MUST  
BE INSTALLED WITH SLOT  
OPENINGS PERPENDICULAR  
TO THE SIDEWALK  
FRAME TO BE SET IN FULL  
MORTAR BED

PAVEMENT

WALLS TO BE BRICK OR  
CONCRETE BLOCK.  
OUTSIDE FACE TO BE PLASTERED  
WITH 1" CEMENT MORTAR.

CONCRETE

**SECTION A-A**



STANDARD GUTTERMOUTH

EDGESTONE

PAVEMENT

ARCH OVER OUTLET PIPE WITH  
BRICKS LAID AS HEADERS AND  
ON EDGE

INVERT TO BE 1/2 I.D. OF PIPE

VARIES (4" MIN.)

**SECTION B-B**



**Boston Water and  
Sewer Commission**

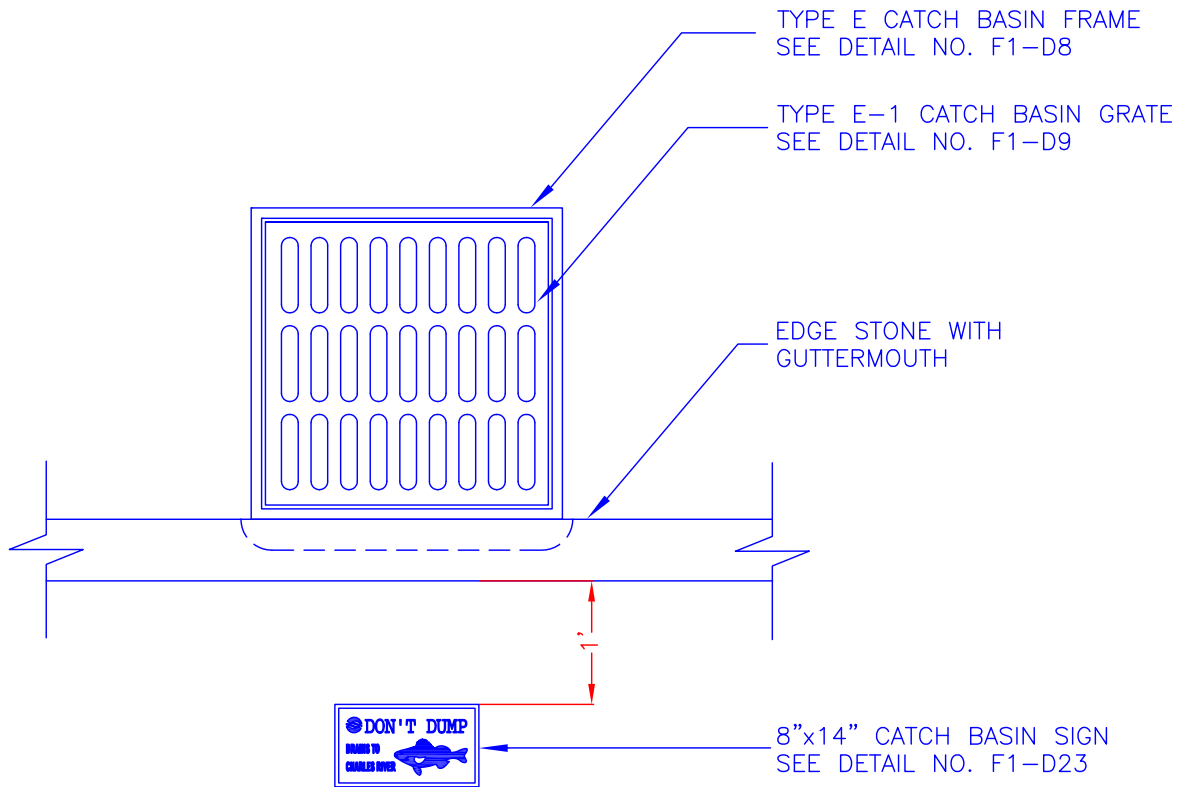
980 HARRISON AVE., BOSTON, MA 02119  
(617) 989-7000 www.bwsc.org

**DROP INLET WITH GUTTERMOUTH**

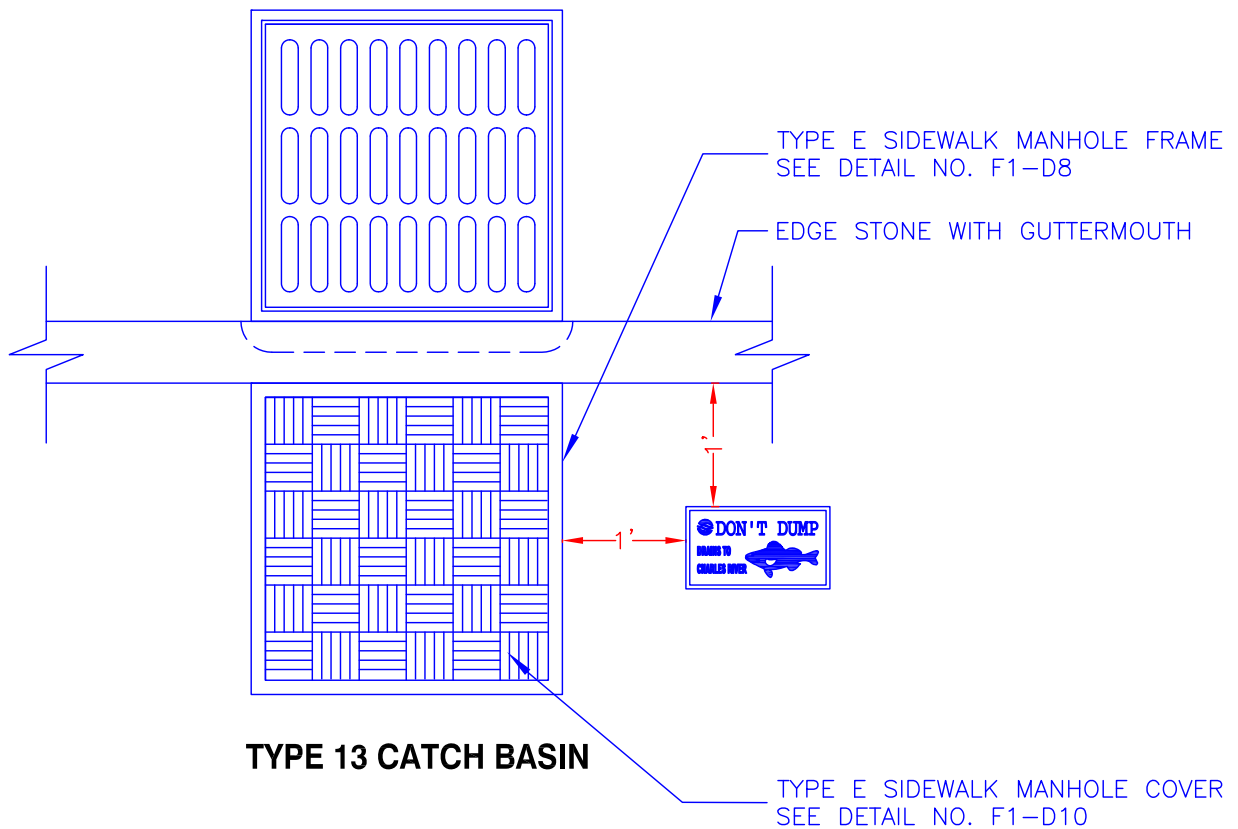
Scale: Not To Scale

DATE:  
Apr. 21, 2017

DETAIL NO.  
**B-01e**



**STANDARD CATCH BASIN**



**TYPE 13 CATCH BASIN**

Location: \\bwscc.org\public\personal\donohoe\1\Desktop\B-01f - Catch Basin Sign Installation\_rev.dwg  
 Plotted on: Wednesday, February 13, 2019 - 12:17 PM by Donohoe, William



**Boston Water and Sewer Commission**  
 980 HARRISON AVE., BOSTON, MA 02119  
 (617) 989-7000 www.bwsc.org

**CATCH BASIN SIGN INSTALLATION**

Scale: Not To Scale

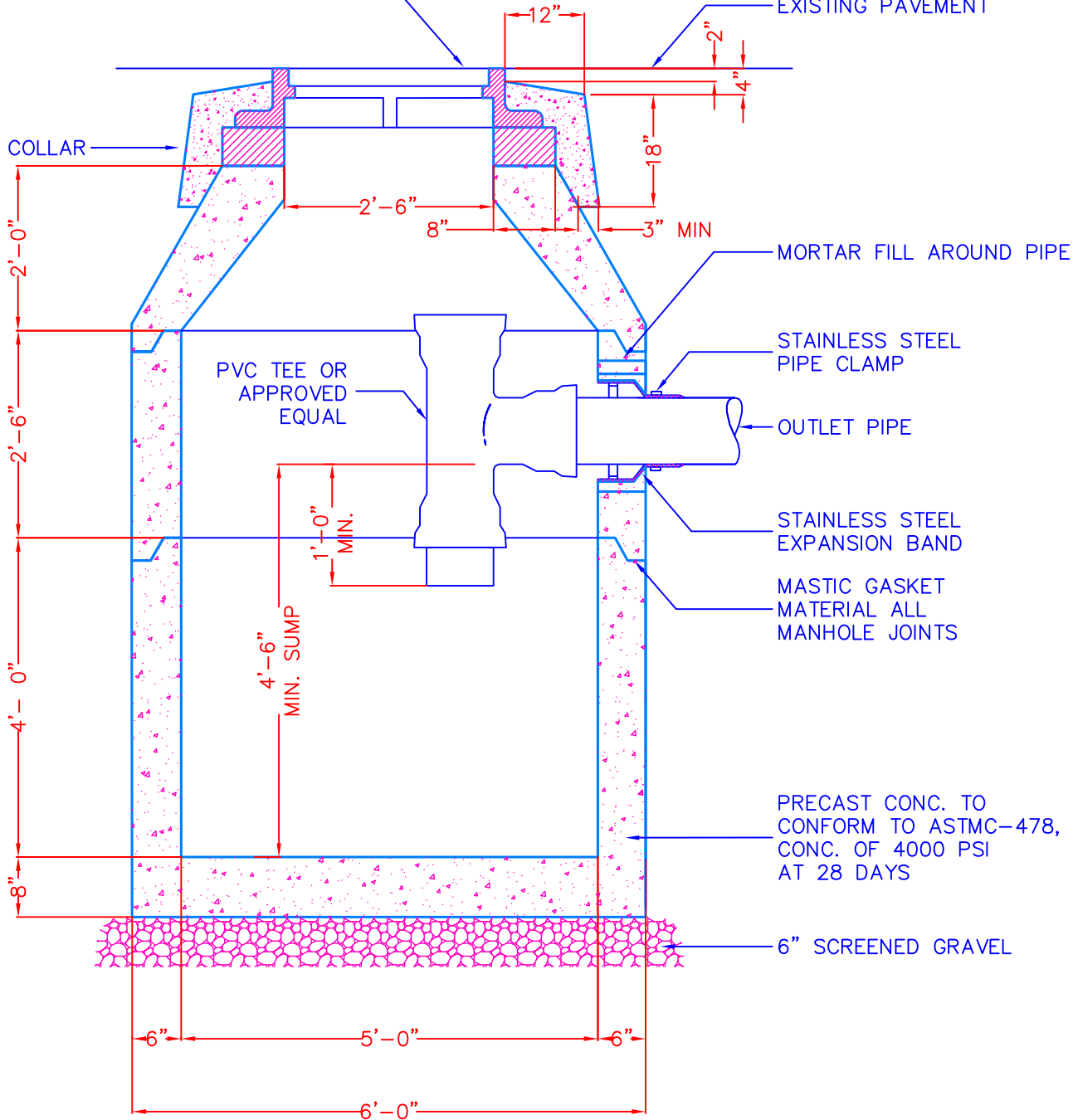
DATE:  
 Feb. 13, 2019

DETAIL NO.  
**B-01f**

BWSC STANDARD  
CATCH BASIN  
FRAME AND GRATE

EXISTING PAVEMENT

CONCRETE COLLAR



MORTAR FILL AROUND PIPE

PVC TEE OR  
APPROVED  
EQUAL

STAINLESS STEEL  
PIPE CLAMP

OUTLET PIPE

STAINLESS STEEL  
EXPANSION BAND

MASTIC GASKET  
MATERIAL ALL  
MANHOLE JOINTS

PRECAST CONC. TO  
CONFORM TO ASTM C-478,  
CONC. OF 4000 PSI  
AT 28 DAYS

6" SCREENED GRAVEL

Location:Filename: V:\eng\ACAD\_STD\Technical Details\B - Sewer Details\B-01g - Catch Basin with Oil Trap Outlet.dwg  
Plotted on: Tuesday, January 15, 2013 - 12:38 PM by Donohoe, William



**Boston Water and  
Sewer Commission**

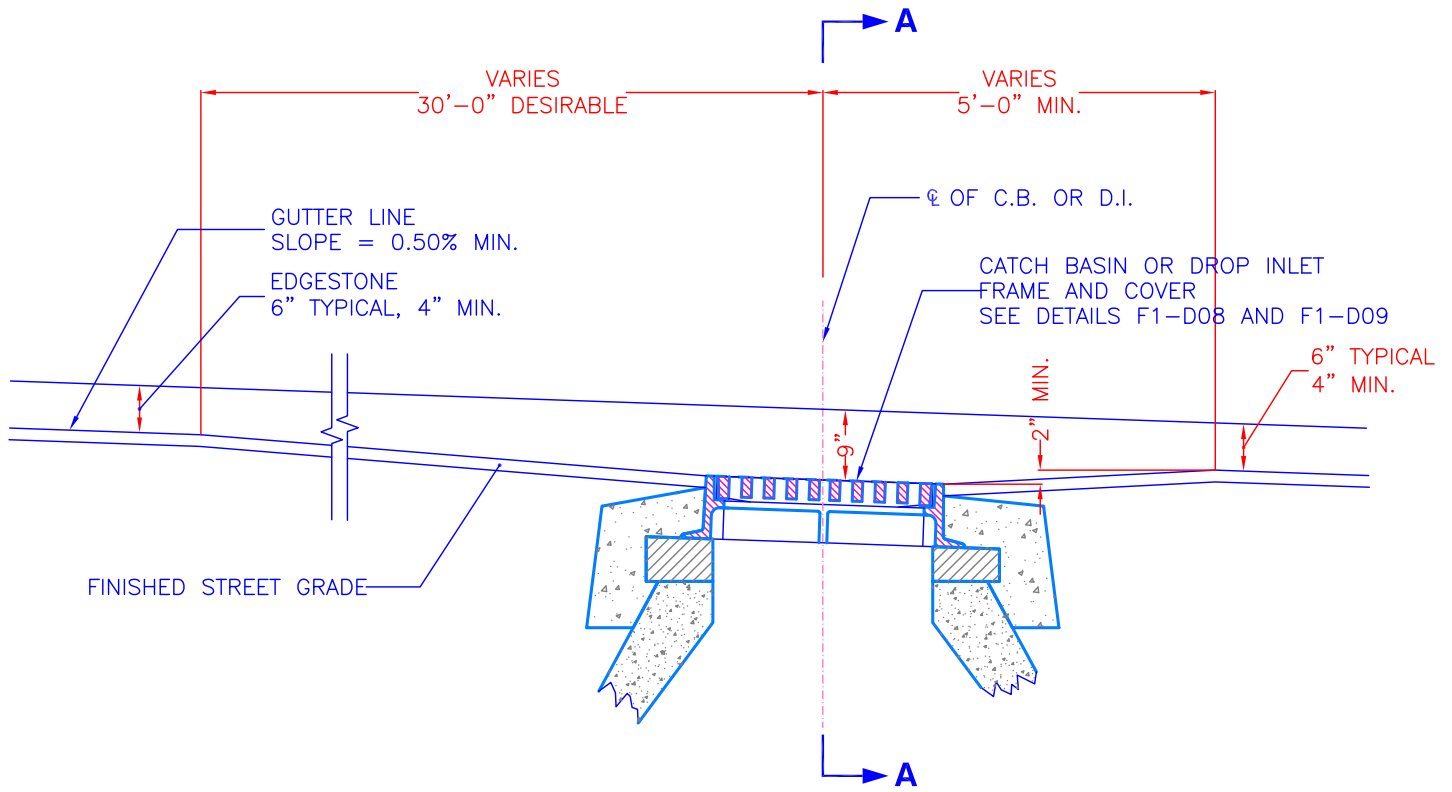
980 HARRISON AVE., BOSTON, MA 02119  
(617) 989-7000 www.bwsc.org

**CATCH BASIN WITH OIL TRAP OUTLET**

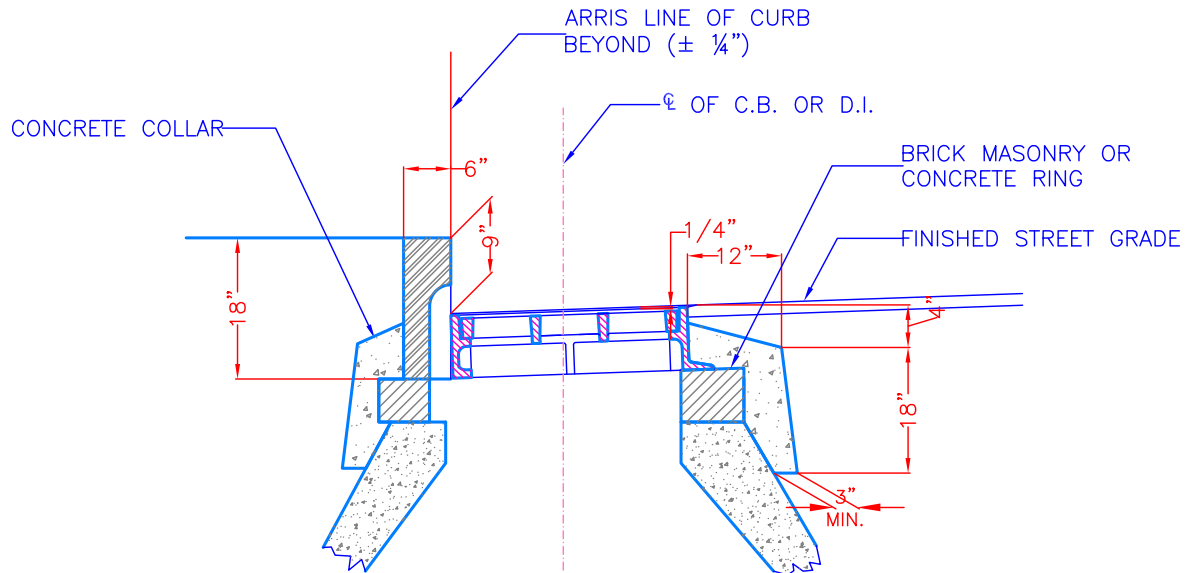
Scale: Not To Scale

DATE:  
June 30, 2012

DETAIL NO.  
**B-01g**



**PROFILE ALONG GUTTER LINE**



**SECTION A-A**

Location:Filename: V:\eng\ACAD\_STD\Technical Details\B - Sewer Details\B-01h - Tolerances for Setting Catch Basin and Curb Inlet Frame.dwg  
Plotted on: Tuesday, January 15, 2013 - 12:49 PM by Donohoe, William



**Boston Water and Sewer Commission**

980 HARRISON AVE., BOSTON, MA 02119  
(617) 989-7000 www.bwsc.org

**TOLERANCES FOR SETTING CATCH BASIN AND CURB INLET FRAME**

Scale: Not To Scale

DATE:  
June 30, 2012

DETAIL NO.  
**B-01h**