



BOSTON WATER & SEWER COMMISSION
REHABILITATION OF THE NEW BOSTON MAIN INTERCEPTOR
Contract No. 21-309-005A
Report for August 1 through August 31, 2023

PROJECT SUMMARY

The New Boston Main Interceptor (NBMI) is a critical part of the BWSC's wastewater system, carrying sewage and stormwater from more than 3,000 acres in City neighborhoods. Due to severe degradation, the NBMI system needs to be rehabilitated. The goal of this project is to rehabilitate a 500-foot portion of the existing 102-inch NBMI and four major sewer structures. The sewer system is approximately 25 to 35 feet deep, and rehabilitation work is being done in a "trenchless" manner to avoid deep excavation along the pipe length and to minimize neighborhood and traffic disruption.

SPECIAL MANHOLE B – MOAKLEY PARK

COMPLETED WORK

Replaced and reconfigured a 24-inch pipe where flows come into the NBMI from the north to reduce turbulence. The purpose of this work is to reduce the corrosive and odorous gases caused by the sewer.

UPCOMING WORK

None anticipated in this phase of work.

SPECIAL MANHOLE C – DORCHESTER AVE

COMPLETED WORK

Reconfigured flow channels and installed new grate walkways, handrails, and ladders for safe maintenance. Installed two new stop log systems. Rehabilitated interior with cement-based spray-on liner and epoxy coating, including a portion of the 36" pipe conveying flows between Manhole C and Manhole D.

UPCOMING WORK

None anticipated for this phase of work.

SPECIAL MANHOLE D – PREBLE ST

COMPLETED WORK

Set up work zone and detour on Preble Street (eastbound lanes). Installed flow bypass and began demolition of chamber interior.

UPCOMING WORK

Sliplining of 102-inch pipe and rehabilitation of structure to be completed from Aug to Dec 2023.

SPECIAL MANHOLE E – SOUTHAMPTON ST

COMPLETED WORK

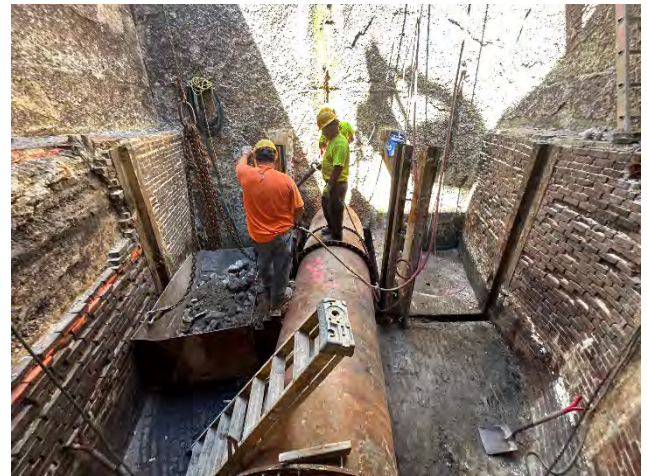
Repaired/rebuilt concrete walls and refurbished brick surfaces and stop log systems. Rehabilitated surfaces with cementitious spray-on liner and epoxy coating. Replaced grate walkways, handrails, and ladders necessary for safe maintenance.

UPCOMING WORK

None anticipated in this phase of work.



Location Map



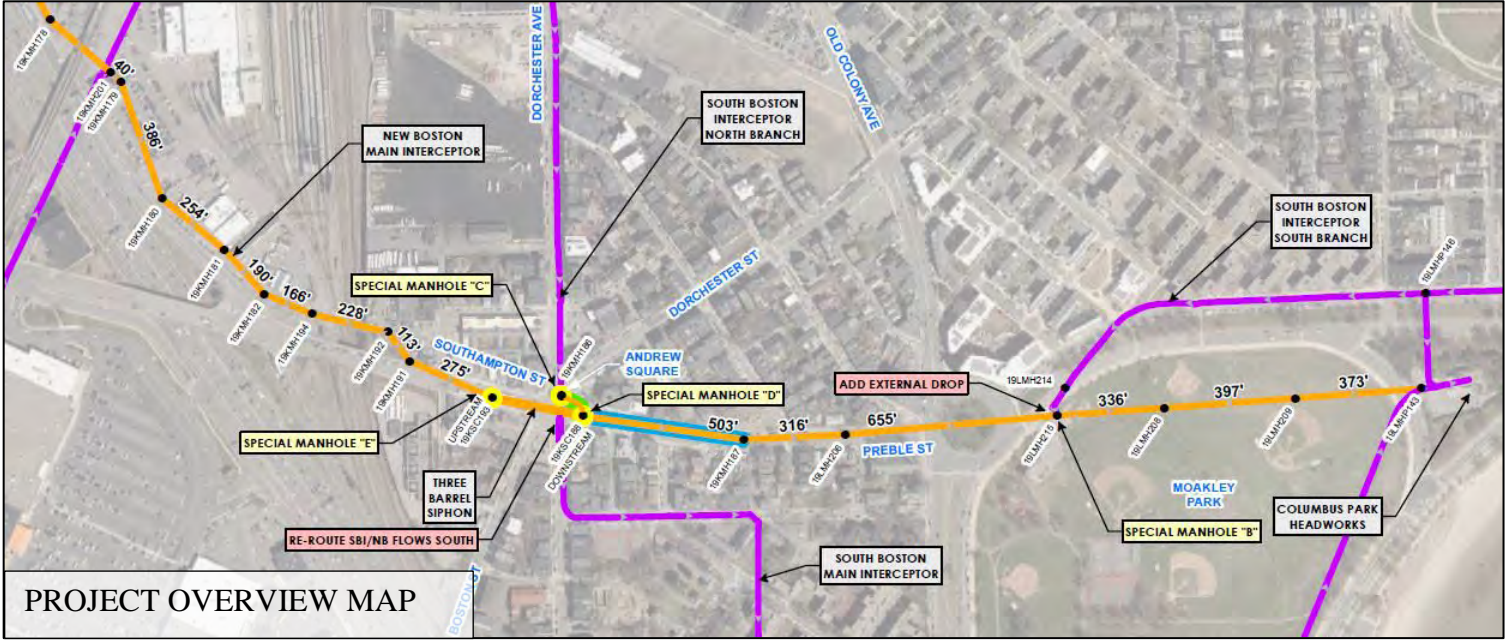
Existing stop log guides in MH D



Slipline guide beams and bypass in MH D

NOTICE:

Preble Street work zone and detour will remain in effect for several months (see route on page 2).



- ❖ Pedestrian and emergency access will be maintained
- ❖ Construction activities will occur at various times depending on work
- ❖ Coordination with businesses and abutters will be maintained during construction

Contact us at:
 Project Field Office Voicemail: 617-865-9299 (daytime) or 617-989-7900 (24/7 emergency)
 Email: nbmi@bwsc.org