



**BOSTON WATER & SEWER COMMISSION**  
**REHABILITATION OF THE NEW BOSTON MAIN INTERCEPTOR**  
**Contract No. 21-309-005A**  
*Report for November 1 through November 30, 2023*

## PROJECT SUMMARY

The New Boston Main Interceptor (NBMI) is a critical part of the BWSC's wastewater system, carrying sewage and stormwater from more than 3,000 acres in City neighborhoods. Due to severe degradation, the NBMI system needs to be rehabilitated. The goal of this project is to rehabilitate a 500-foot portion of the existing 102-inch NBMI and four major sewer structures. The sewer system is approximately 25 to 35 feet deep, and rehabilitation work is being done in a "trenchless" manner to avoid deep excavation along the pipe length and to minimize neighborhood and traffic disruption.

### SPECIAL MANHOLE B – MOAKLEY PARK

#### COMPLETED WORK

Replaced and reconfigured a 24-inch pipe where flows come into the NBMI from the north to reduce turbulence. The purpose of this work is to reduce the corrosive and odorous gases caused by the sewer.

#### UPCOMING WORK

None anticipated in this phase of work.

### SPECIAL MANHOLE C – DORCHESTER AVE

#### COMPLETED WORK

Reconfigured flow channels and installed new grate walkways, handrails, and ladders for safe maintenance. Installed two new stop log systems. Rehabilitated interior with cement-based spray-on liner and epoxy coating, including a portion of the 36" pipe conveying flows between Manhole C and Manhole D.

#### UPCOMING WORK

None anticipated for this phase of work.

### SPECIAL MANHOLE D – PREBLE ST

#### COMPLETED WORK

Completed rehabilitation of the 36" connector pipe between Manhole C and Manhole D. Completed jacking of slipline pipe through more than 500 feet of the NBMI. Grouted the space between the original pipeline and the slipline pipe. Reconfigured the way the 36" pipe from Manhole C enters Manhole D to reduce turbulence, corrosion, and odors. Began to rebuild the interior brick surfaces.

#### UPCOMING WORK

Continue rehabilitation of structure through Dec 2023, including stoplog systems to control flows, and new grate walkways, handrails, and ladders necessary for safe maintenance.

### SPECIAL MANHOLE E – SOUTHAMPTON ST

#### COMPLETED WORK

Repaired/rebuilt concrete walls and refurbished brick surfaces and stop log systems. Rehabilitated surfaces with cementitious spray-on liner and epoxy coating. Replaced grate walkways, handrails, and ladders necessary for safe maintenance.

#### UPCOMING WORK

None anticipated in this phase of work.

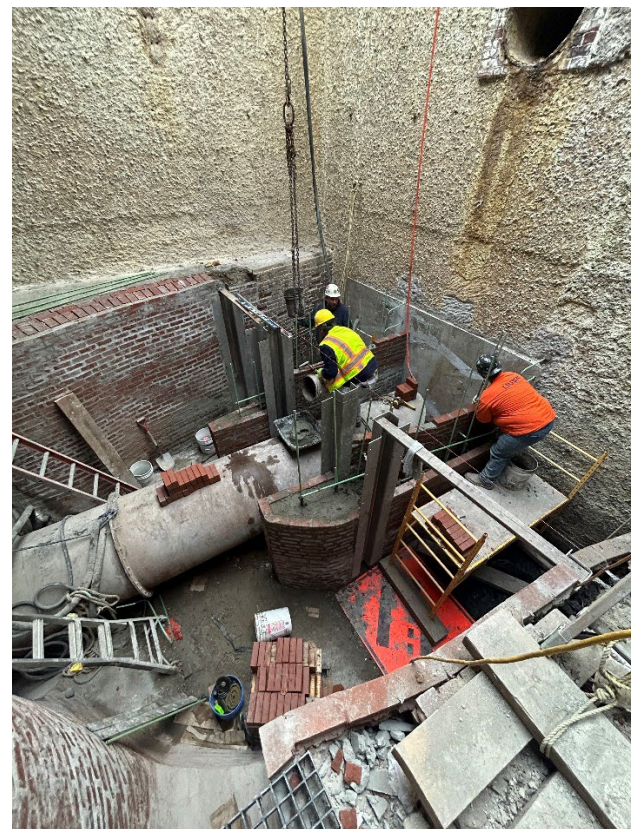


Location Map

#### **NOTICE:**

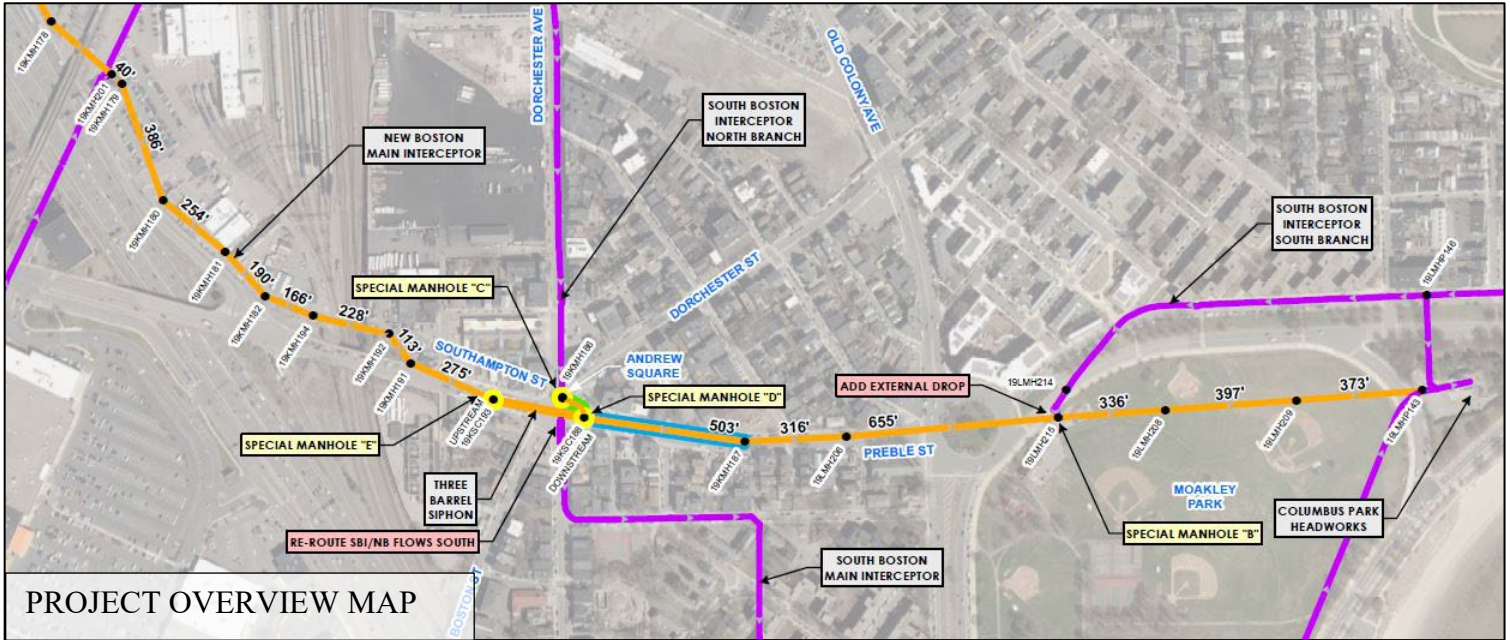
**Preble Street work zone and detour will remain in effect potentially into January 2024 (see route on page 2).**

During the project, we have encountered issues with excessive water infiltration coming into the structures in Andrew Square. Investigations revealed a local sewer that was not functioning properly. To resolve this, a new sewer manhole and connection need to be installed within the existing work zone, delaying the project beyond our original completion timeline of December 2023.



After sliplining, brickwork is rebuilt in Special Manhole D.





- ❖ **Pedestrian and emergency access will be maintained**
- ❖ **Construction activities will occur at various times depending on work**
- ❖ **Coordination with businesses and abutters will be maintained during construction**